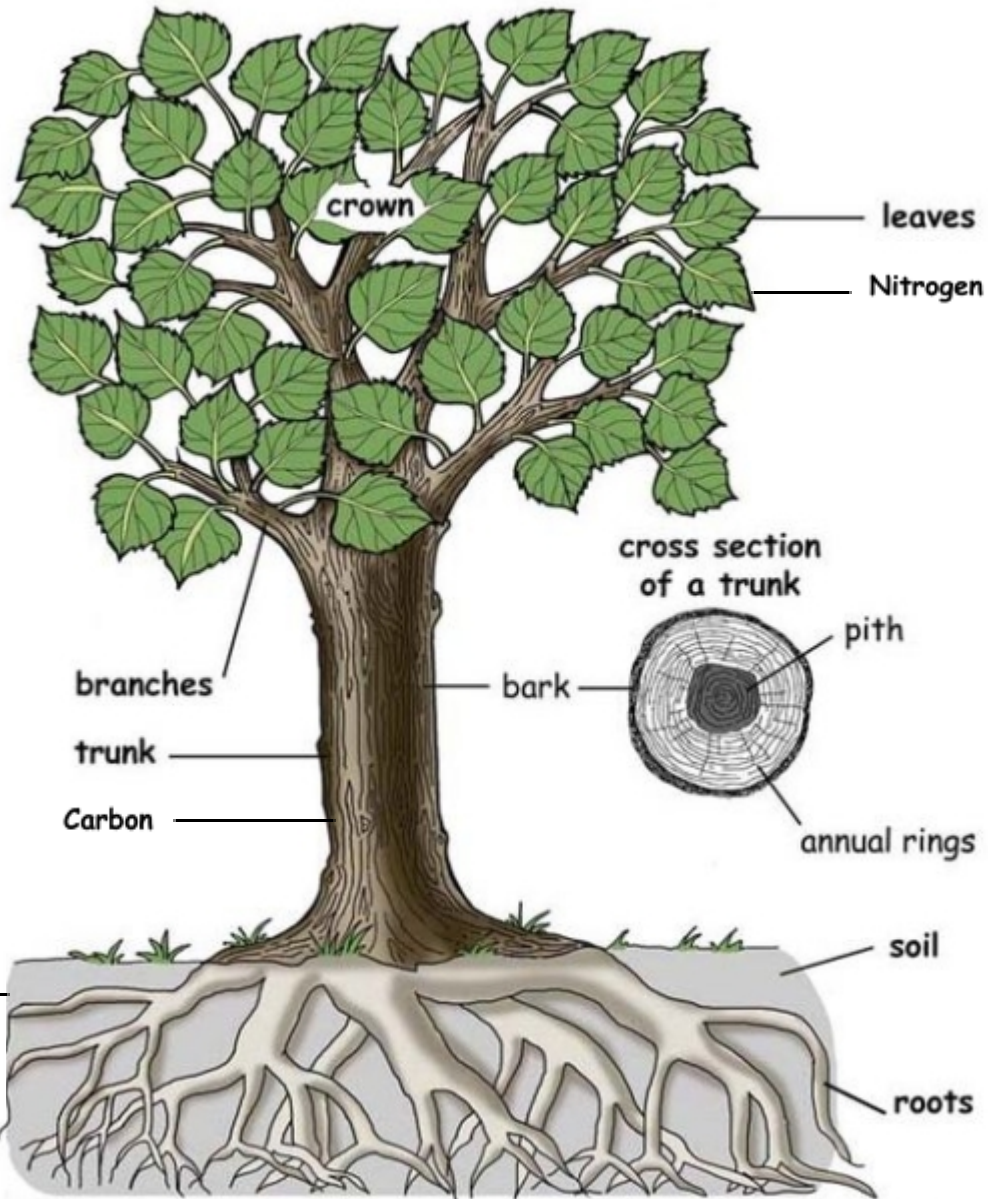


Parts of the Tree



leaves

Nitrogen

crown

cross section of a trunk

pith

bark

branches

trunk

annual rings

Carbon

soil

roots

Wood Wide Web

Interdependent web of organisms

Intertwined stability, fungus network, nutrients, hormones, alarm signal sharing between trees

©Sheri Amsel

www.exploringnature.org